



*CORRA/GLAD®  
PRODUCTS*

## ***Corra/Clad® MC Cable***

*The contractors' cable of choice in place of conduit and wire.*



- *Installs fast and easy*
- *Lowers labor costs*
- *Replaces conduit and wire*
- *Provides superior grounding*
- *UL Listed*





# ***Corra/Clad<sup>®</sup> MC Cable provides total installed, cost savings...***

Contractors looking to save on labor during the installation of power are making CCI's Corra/Clad<sup>®</sup> the cable of choice in place of conduit and wire. Corra/Clad consists of THHN soft drawn annealed copper conductors (solid or stranded), with UL type TFN or TFFN insulation. Conductors are cabled with fillers, and wrapped with an overall solid Flexi-Rib<sup>™</sup> seamless, continuous, aluminum sheath, which provides watertight protection. Corra/Clad can also be furnished with a PVC jacket over the sheath for use in corrosive environments or direct burial.

## **Flexi-Rib<sup>™</sup> Design is Unique**

Flexi-Rib is a breakthrough in cable sheath design. It provides all of the benefits of interlocked metal, with none of the disadvantages. Corra/Clad is watertight, bends and stays and can be shaped to tight angles, unlike steel armor cable which cannot be used in wet applications, springs out of position, and doesn't conform to tight angles.

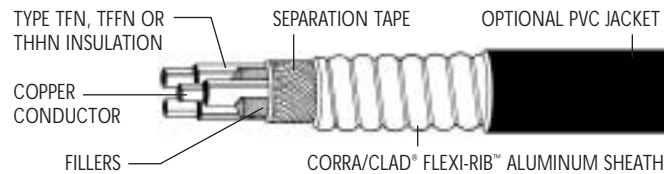
Corra/Clad is quicker and easier to install than conventional pipe and wire. The lightweight aluminum armor means that Corra/Clad weighs less than steel armored cable, it's also easier to strip back. The flexible aluminum allows for ease of installation in one step. Corra/Clad saves time and money by eliminating conduit assembly, cutting and wire pulling. Corra/Clad needs no special tools or anti-short bearings.

It can be cut to length and stripped in a matter of seconds with ordinary wire cutters. Once formed, it stays put, the bending radius is seven times the external diameter of the sheath, which eliminates wasted cable caused by larger diameter bends.

# Corra/Clad<sup>®</sup> design is unique

Corra/Clad<sup>®</sup> is lightweight, easy to work, and tough

Corra/Clad's sheath is solid aluminum, which makes it more than 50% lighter than interlocked armor cable, yet it can stand up to the roughest use including severe environments. Corra/Clad can be quickly channeled in one continuous length through the hollow space in a ceiling or without 10' splices or couplings.



Here are just some of the benefits you get with Corra/Clad

- Costs can be cut by up to 65%
- More than 50% lighter
- Meets or exceeds all code requirements of NEC Article 330
- UL approved
- Crush resistant
- Waterproof
- Pull easily
- Bends and stays
- Can be run in long continuous lengths
- Highly versatile, can be used for numerous applications
- No special tools needed
- Comes in easy to handle reels
- Highly corrosion resistant

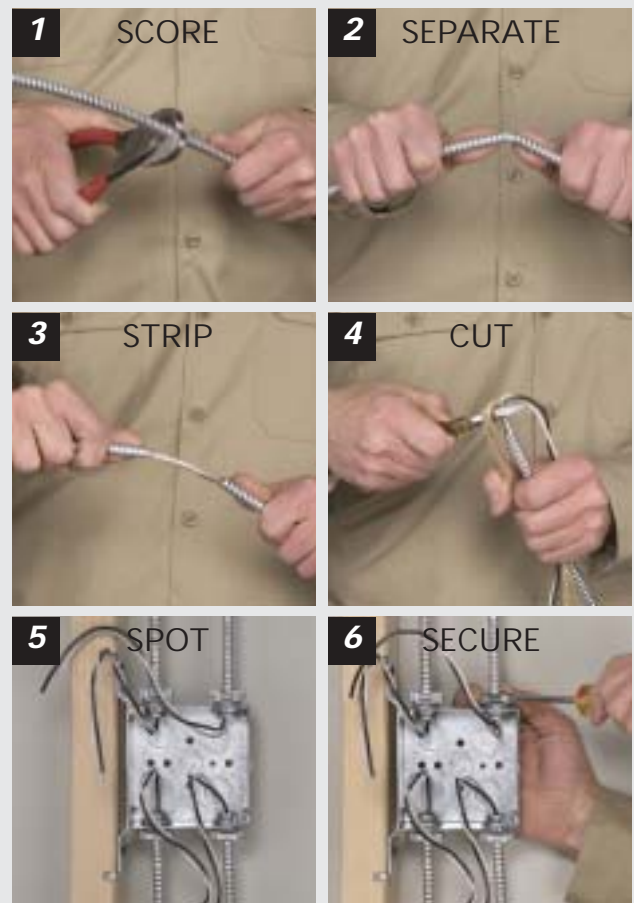


Installs quick and easy

No other cable installs faster than Corra/Clad. It installs using the same type of fasteners that are used with EMT or armored cable and can be terminated in outlet or junction boxes using Type MC fittings.

*Here's how easy it is:*

- **Score** – Using a knife or cable cutters, score the sheath all the way around at the desired length.
- **Separate** – Grip cable with both hands on either side of the score, flex and separate.
- **Strip** – Strip sheath from cable by pulling firmly.
- **Cut** – Cut away the protective tape and fillers.
- **Spot** – Spot the connector at the proper location in the enclosure and tighten with a lock nut.
- **Secure** – Firmly seat cable end into connector and secure in place by tightening connector with screwdriver while pressing in on the cable.





## Corra/Clad® MC Cable

Part# Solid	Part # Stranded	Size of Conductor	Nom. O.D. Inches Solid	Inches Stranded	Weight lbs/1000ft	Aluminum Sheath Ground Size Equivalence*
92852		18/2	0.335	0.355	40	8
92853		18/3	0.345	0.370	49	8
92854		18/4	0.370	0.395	58	6
92652		16/2	0.355	0.370	47	8
92653		16/3	0.370	0.390	61	6
92654		16/4	0.395	0.415	75	6
92452		14/2	0.380	0.400	69	6
92453		14/3	0.390	0.415	88	6
92454		14/4	0.415	0.445	108	6
92252	92202	12/2	0.410	0.435	91	6
92253	92203	12/3	0.430	0.455	119	6
92254	92204	12/4	0.460	0.495	172	6
92152		10/2	0.475	0.530	153	5
92153		10/3	0.495	0.560	198	5
92154		10/4	0.565	0.600	245	3

## Corra/Clad® MC Cable

For Hospitals & Nursing Homes (With Green Insulated Ground Wire)

Part# Solid	Part # Stranded	Size of Conductor	Nom. O.D. Inches Solid	Inches Stranded	Weight lbs/1000ft	Aluminum Sheath Ground Size Equivalence*
92483		14/2 W/G	0.390	0.415	88	6
92484		14/3 W/G	0.415	0.445	108	6
92485		14/4 W/G	0.450	0.480	130	6
92283	92273	12/2 W/G	0.430	0.455	119	6
92284	92274	12/3 W/G	0.460	0.495	172	6
92285	92275	12/4 W/G	0.500	0.535	206	2
92183	92173	10/2 W/G	0.495	0.560	198	5
92184	92174	10/3 W/G	0.565	0.600	245	3
92185	92175	10/4 W/G	0.610	0.640	295	2

\* When using EXCLUSIVE sheath as a ground, this is the approximate gauge size that the aluminum sheath provides

**Note: Other sizes and custom engineered designs available, contact Coleman Cable, Inc.**

### Applicable Codes for Corra/Clad®

#### NEC Article

225.10 Wiring on Buildings  
 250.118 (10) Types of Equipment Grounding Conductors  
 300.22 (B) Ducts or Plenums Used for Environmental Air  
 330 Metal Clad Cable: Type MC  
 392.3 (A) Wiring Methods  
 396.10 (A) Messenger Supported Wiring – Cable Types  
 501.10 (B) Class 1, Division 2  
 502.10 (B) Class II, Division 2  
 503.10 (A) Class III, Division 1 & 2  
 511.7 Commercial Garages, Repair & Storage  
 513.7 (A) Aircraft Hangers – Wiring and Equipment  
     Not Installed in Class I Locations – Fixed Wiring  
 515.7 (A) Bulk Storage Plants – Wiring and Equipment Above Class I  
     Locations – Fixed Wiring  
 516.7 (A) Spray Application, Dipping and Coating Process – Wiring  
     and Equipment Not Within Class I and II Locations – Wiring

#### NEC Article

517.10 Health Care Facilities  
 518.4 Assembly Occupancies – Wiring Methods  
 520.5 Theaters, Audience Areas of Motion Picture and Television  
     Studios, Performance Areas and Similar Locations –  
     Wiring Methods  
 530.11 Motion Picture and Television Studios and Similar Locations –  
     Permanent Wiring  
 604.6 (A)(1) Manufactured Wiring Systems – Cables  
 610.11 Cranes and Hoists – Wiring Method  
 620.21 Elevators, Dumbwaiters, Etc. - Wiring Methods  
 645.5 (D) (2) Information Technology Equipment –  
     Under Raised Floors  
 725.11(B) Remote-Control, Signaling, and Power-Limited Circuits –  
     Safety Control Equipment – Physical Protection  
 760.52 (B) Fire Alarm Systems – PLFA Wiring Methods and Materials  
 800.3 Communications Circuits

# ***...with the versatility and safety you need.***

Applications for Corra/Clad® are varied and many.

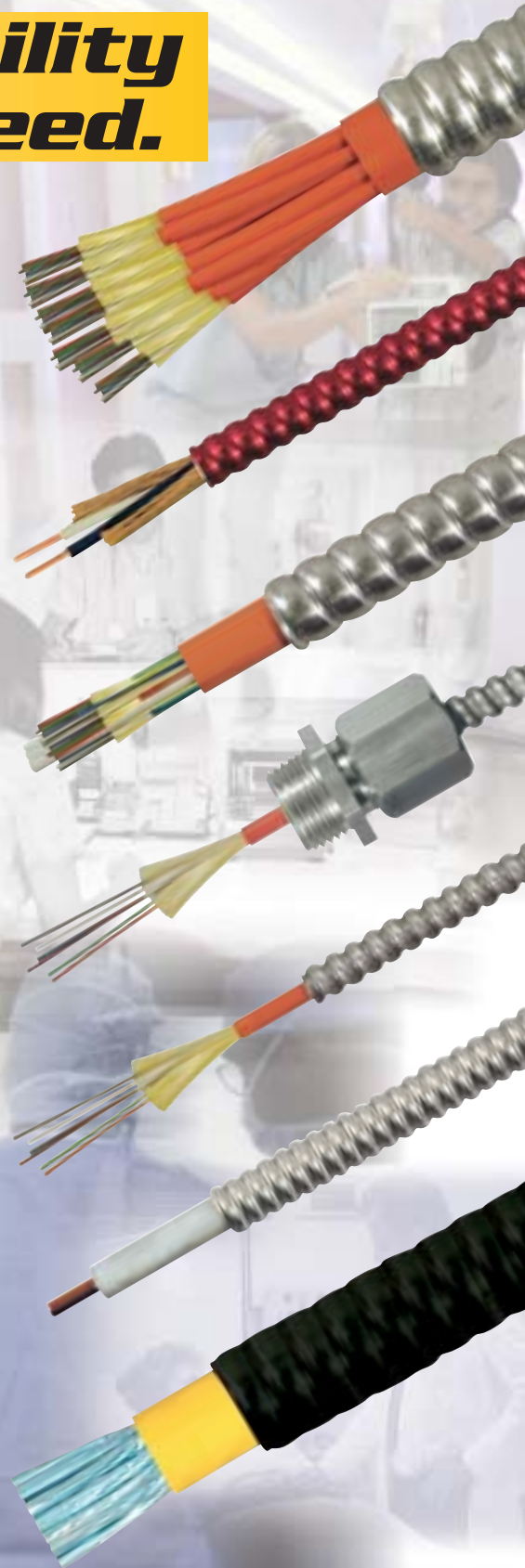
Corra/Clad® MC Cable uses are governed by the National Electric Code Article 330 and applicable local codes, applications include the following:

- For services, feeders and branch circuits
- For power, lighting, control and signal circuits
- Indoors, exposed or concealed
- Direct buried or in concrete encasement (with PVC jacket)
- As aerial cable on a messenger (with PVC jacket)
- In cable trays or as open runs
- Under raised floors, and above suspended ceilings
- Outdoors or in wet locations (with PVC jacket)
- Plenums
- Any air handling passageway
- Hazardous (classified) environments

## Specialized applications

Corra/Clad® has become the wiring method of choice in health care facilities. The outer jacket is an approved grounding means and employs a continuous gas/vapor tight aluminum sheath which permits it to be used in hospitals and health care facilities, including patient areas. Corra/Clad with a solid aluminum sheath is ideal for ducts or plenum applications because unlike interlock sheath constructions, it does not allow smoke to chimney through the cable.

The Fire/Clad® product is preferred for fire alarm installations. The jacketed product is suitable for direct burial underground or in concrete.



**COLEMAN CABLE OFFERS A COMPLETE LINE OF  
ELECTRICAL AND ELECTRONIC PRODUCTS FOR  
INDUSTRIAL, HOME TECHNOLOGY,  
ELECTRONIC, DATACOM AND SECURITY  
APPLICATIONS.**

Coleman Cable is a leading manufacturer and innovator of wire and cable products. Our product offerings are extensive and include: portable cord, machine tool wire, extension cords, thermostat wire, voice/data, coaxial, fire alarm, electronic as well as custom-engineered cable. Our Signal®, Baron®, Seoprene®, Polar/Solar® and Road Power® brands are universally recognized for their market leadership positions.

Our relentless commitment to product quality is complemented by a technical expertise that's coupled with extensive manufacturing capabilities. We are devoted to providing unmatched customer service and offer programs designed to provide our customers exceptional value in today's competitive market place.

Extensive product offerings, technical expertise, a dedicated effort for customer service and an ongoing commitment to provide product innovation are some of the reasons for Coleman Cable's leadership in the wire and cable industry.



1530 Shields Drive • Waukegan, IL 60085 • 800-323-9355 • Fax: 847-689-1192 • [www.colemancable.com](http://www.colemancable.com)

LT505-06-01  
Printed in USA CCI6001 0406

